

SANTA FEATURES

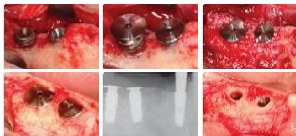
SANTA *Special Sohn's Augmentation New Tenting Abutment*

- Tenting Abutment optimized for simple 3D ridge augmentation
- Shortened healing period for edentulous patients
- Shortened treatment period and increased implant success rate
- Shorten the number of surgical rounds and prevent complications after surgery
- No need to harvest bone fragments from other sites



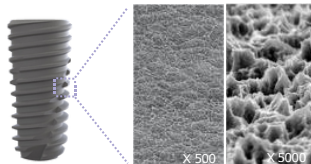
T/D	C	Ø 5.0	Ø 6.0
Ø4mm	1	S105	S106
	2	S205	S206
	3	S305	S306
3mm	3	S205	S206

SANTA Clinical Case



SURFACE FEATURE

S.LA (RA 2.2 μm)



SANDBLASTED, LARGE-GRIT, ACID-ETCHED

The SLA surface is produced by a large grit sand-blasting. The surface is not microporous and therefore provides no enclosed volumes to reduce vulnerability to bacteria. This method analyses the first few atomic layers of the surface, and thus the chemical composition of the material which is in direct contact and interacts with tissue fluids and cells.

BIOTEM IMPLANT SYSTEM

AR | Submerged Implant System
IR | Tissue Level Implant System
BR | External Hex Implant System
MR | One Body Implant System
SANTA

BIOTEM
DENTAL IMPLANT SYSTEM

**IMPORTED AND MARKETING IN INDIA BY:
M/s. AKSHARA ENGINEERING SERVICES**

Email: sales@biotem.in
sales@aksharaengg.com
Mobile: +91 78711 33311
+91 94446 44428
Website: www.biotem.in

AR FIXTURE IR FIXTURE FEATURES

AR Fixture *Sumerged Implant System*

- 11° Morse taper hex connection structure of internal submerged type
- Connection - Narrow / Regular
- Realization of ideal SLA surface treatment with RA value of 2.2µm
- Corkscrew thread & Helix Cutting edge
 - Easy to modify the insertion path due to strong self-tapping effect
 - Soft bone increases initial fixation force
- Easy and convenient Single Pitch Macro Thread
 - Design optimized for SLA surface treatment
 - synchronized thread for stronger initial fixation force
- 1.5° Taper Body
 - Able to obtain initial fixation force required for immediate loading from soft bone
 - Application of Open Thread on the upper part improves the initial fixation force in the soft bone
- Recommended insertion torque: 30 Ncm or less



IR Fixture *Tissue Level Implant System*

- 8° Morse taper octa connection structure of internal non-submerged type
- Realization of ideal SLA surface treatment with RA value of 2.2µm
- Connection - Narrow / Regular / Wide
- Corkscrew Thread & cutting edge
 - Easy to modify implantation path due to strong self-tapping effect
 - Soft bone increases initial fixation force and enables acquisition of insertion torque without deviation depending on drill diameter
- Recommended insertion torque: 30 Ncm or less



BR FIXTURE MR FIXTURE FEATURES

BR Fixture *External Hex Implant System*

- External hex connection structure of Submerged type
- Connection - Narrow / Regular / Wide / T-type Wide
- Realization of ideal SLA surface treatment with RA value of 2.2µm
- Corkscrew Thread & Cutting Edge
 - Easy to modify insertion path due to strong self-tapping effect
 - Soft bone increases initial fixation force
- Straight Body & Apical
 - Easy to adjust insertion depth
 - Soft bone increases initial fixation force
- Recommended insertion torque: 30 Ncm or less



MR Fixture *One Body Implant System*

- One-body implant suitable for narrow spaces such as lower anterior teeth
- Thread Type - Single / Micro
- Denture Type - Single Thread
- Realization of ideal SLA surface treatment with RA value of 2.2µm
- Optimized abutment shape and size for prosthesis without removal
- Recommended insertion torque: 30 Ncm or less



CERTIFICATES



KFDA



ISO 13485



FDA 510(K) AR



FDA 510(K) IR



CE Certificate



RUSSIA Certificate



JAPAN Certificate



FDA 510(K) BR